

Report according to EN 50160 2011

Customer

Name: St. 110/20 kV Deta
Company: Enel Distributie Banat
Location: Deta

Auditor

Name:
Company: Enel Distributie Banat

Start date: 1/1/15 12:00 AM
End date: 12/31/15 11:59 PM
Date: 3/30/16 1:29 PM
Software: Janitza-GridVis 4.1.6(2013-08-22_16-13-54)



Statia 110/20 kV Deta

Device type:	UMG511
EN 61000-4-7 Class:	Class 1
EN 61000-4-30 Class:	Class A
Flicker:	Supported
Events:	Supported
Transients:	Supported

Input Voltage (MediumVoltage):	20000.0V
Frequency:	50.0Hz
Relevant Voltages:	LL
Line selection:	L1 L2 L3

Summary

Frequency +-1%	Passed
Frequency -6%/+4%	Passed
Voltage effective L2-L1 - 1st Test	Passed
Voltage effective L2-L1 - 2nd Test	Passed
Voltage effective L3-L2 - 1st Test	Passed
Voltage effective L3-L2 - 2nd Test	Passed
Voltage effective L1-L3 - 1st Test	Passed
Voltage effective L1-L3 - 2nd Test	Passed
THD U L2-L1	Passed
THD U L3-L2	Passed
THD U L1-L3	Passed
Unbalance Voltage	Passed
Long term flicker L2	Failed
Long term flicker L3	Failed
Long term flicker L1	Failed
Harmonics voltage (rel.) L2	Passed
Harmonics voltage (rel.) L3	Passed
Harmonics voltage (rel.) L1	Passed
Undervoltage	
Overvoltage	

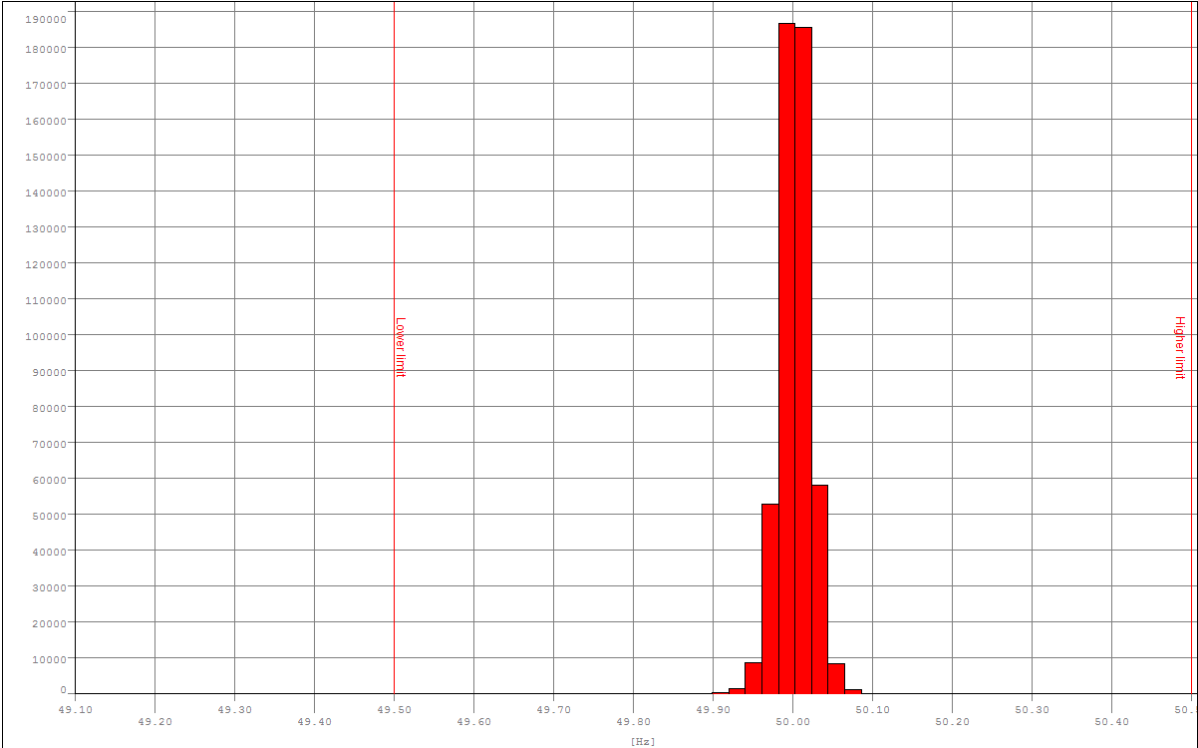
Frequency +-1%

Limits

Lower limit	49.50Hz
Higher limit	50.50Hz
Percentage	99.50%

Results

Min value	49.11Hz
Average value	50.00Hz
Max value	50.13Hz
Undercut	0.00%
Overcut	0.00%
Total out	0.00%
Result	Passed
Recording vacancy	84.06%



- Norm Frequency (10s) [STATIA 110/20 KV DETA]
- Marker Lower limit
- Marker Higher limit

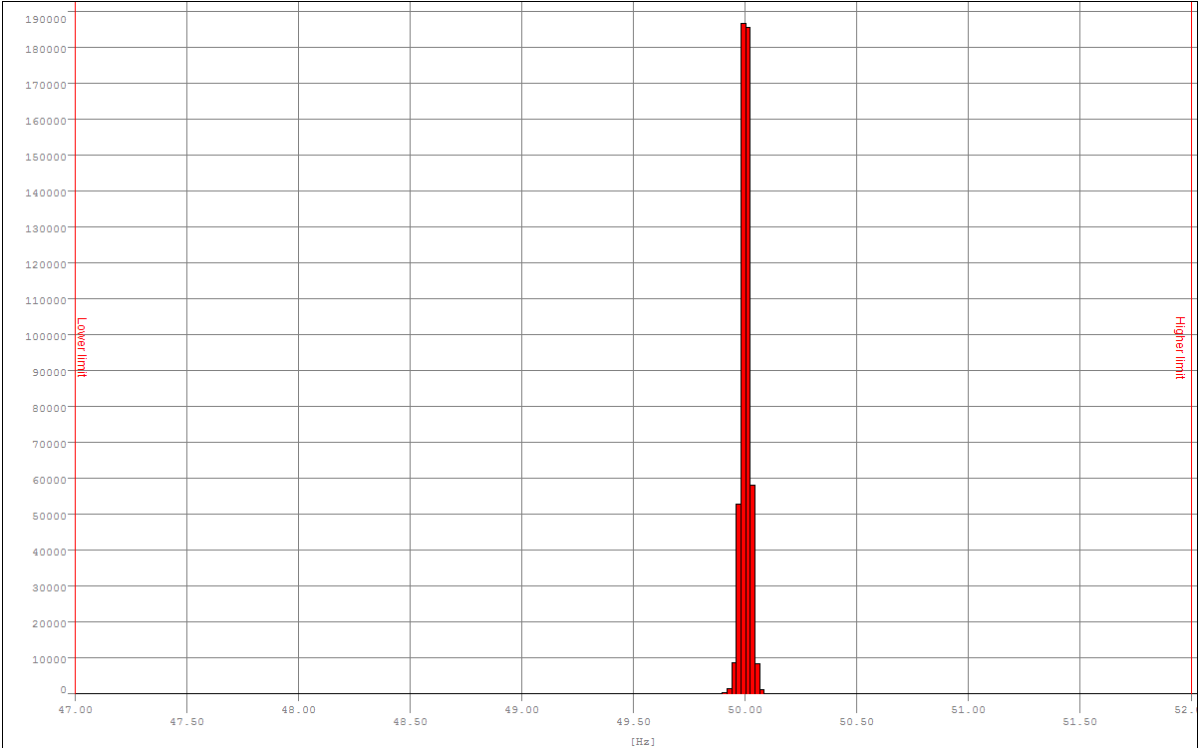
Frequency -6%/+4%

Limits

Lower limit	47.00Hz
Higher limit	52.00Hz
Percentage	100.00%

Results

Min value	49.11Hz
Average value	50.00Hz
Max value	50.13Hz
Undercut	0.00%
Overcut	0.00%
Total out	0.00%
Result	Passed
Recording vacancy	84.06%



- Norm Frequency (10s) [STATIA 110/20 KV DETA]
- Marker Lower limit
- Marker Higher limit

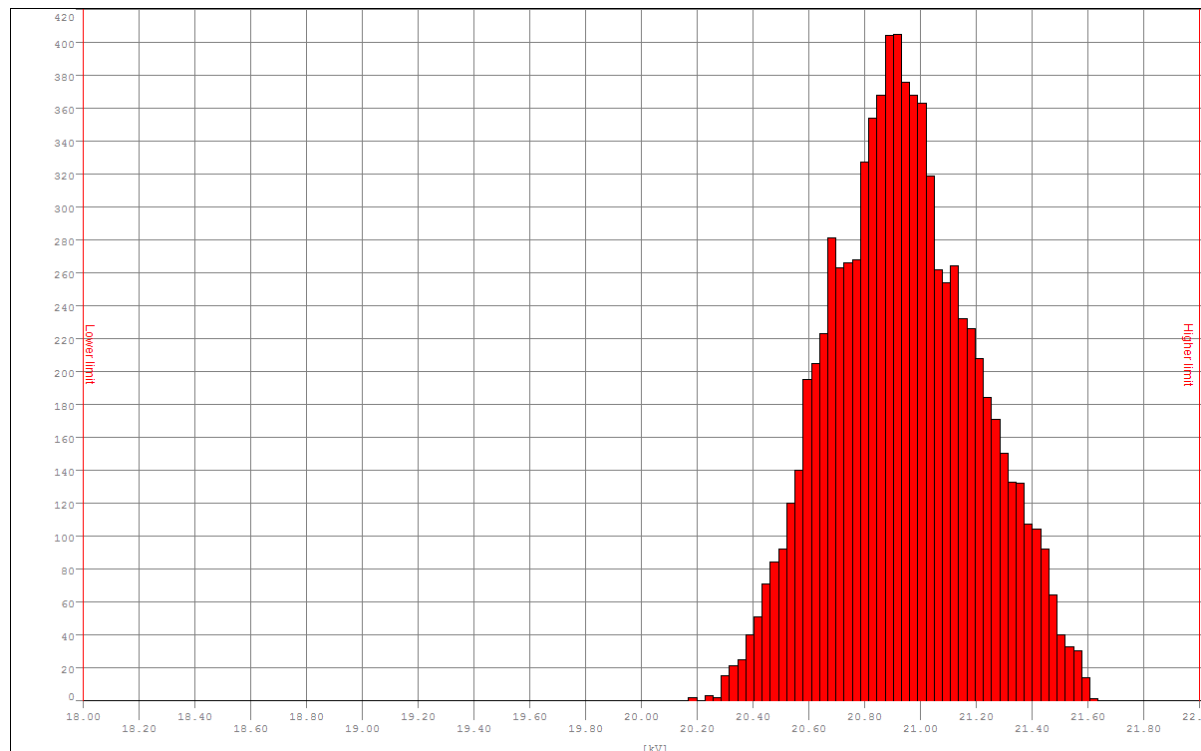
Voltage effective L2-L1 - 1st Test

Limits

Lower limit	18000.00V
Higher limit	22000.00V
Percentage	99.00%

Results

Min value	20168.98V
Average value	20939.28V
Max value	21607.07V
Undercut	0.00%
Overcut	0.00%
Total out	0.00%
Result	Passed
Recording vacancy	84.11%



- Voltage effective L2-L1 (10m) [STATIA 110/20 KV DETA]
- Marker Lower limit
- Marker Higher limit

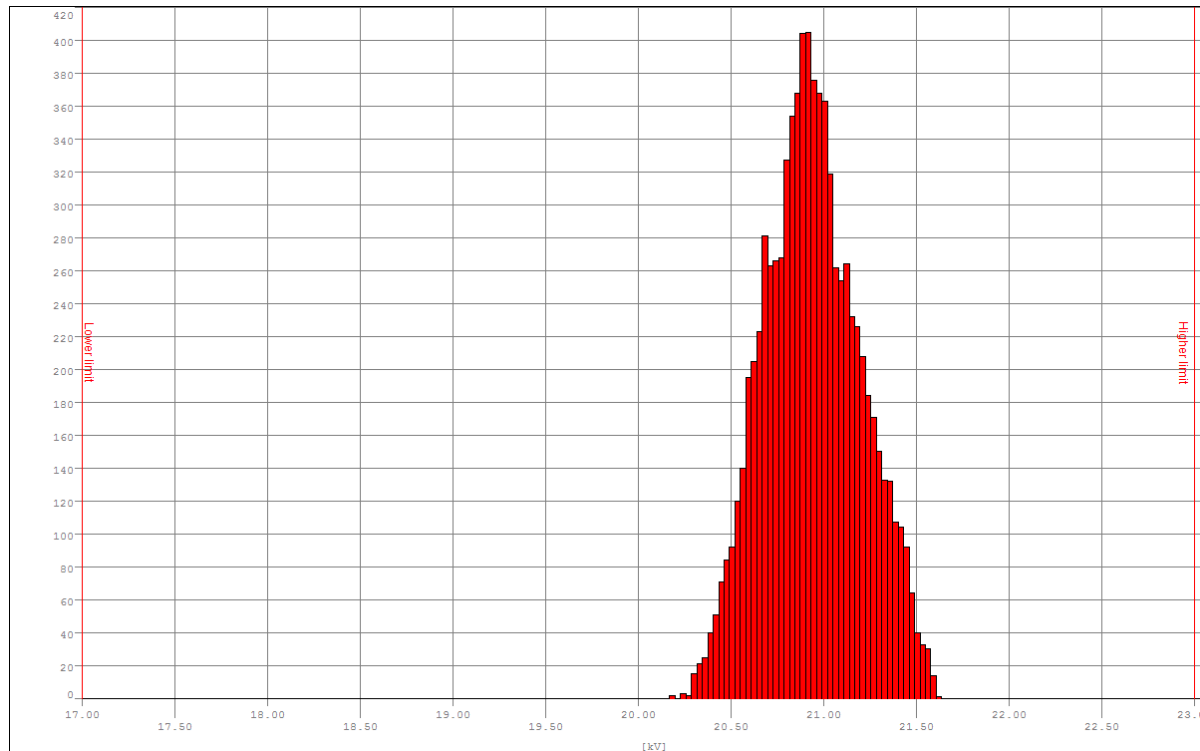
Voltage effective L2-L1 - 2nd Test

Limits

Lower limit	17000.00V
Higher limit	23000.00V
Percentage	100.00%

Results

Min value	20168.98V
Average value	20939.28V
Max value	21607.07V
Undercut	0.00%
Overcut	0.00%
Total out	0.00%
Result	Passed
Recording vacancy	84.11%



- Voltage effective L2-L1 (10m) [STATIA 110/20 KV DETA]
- Marker Lower limit
- Marker Higher limit

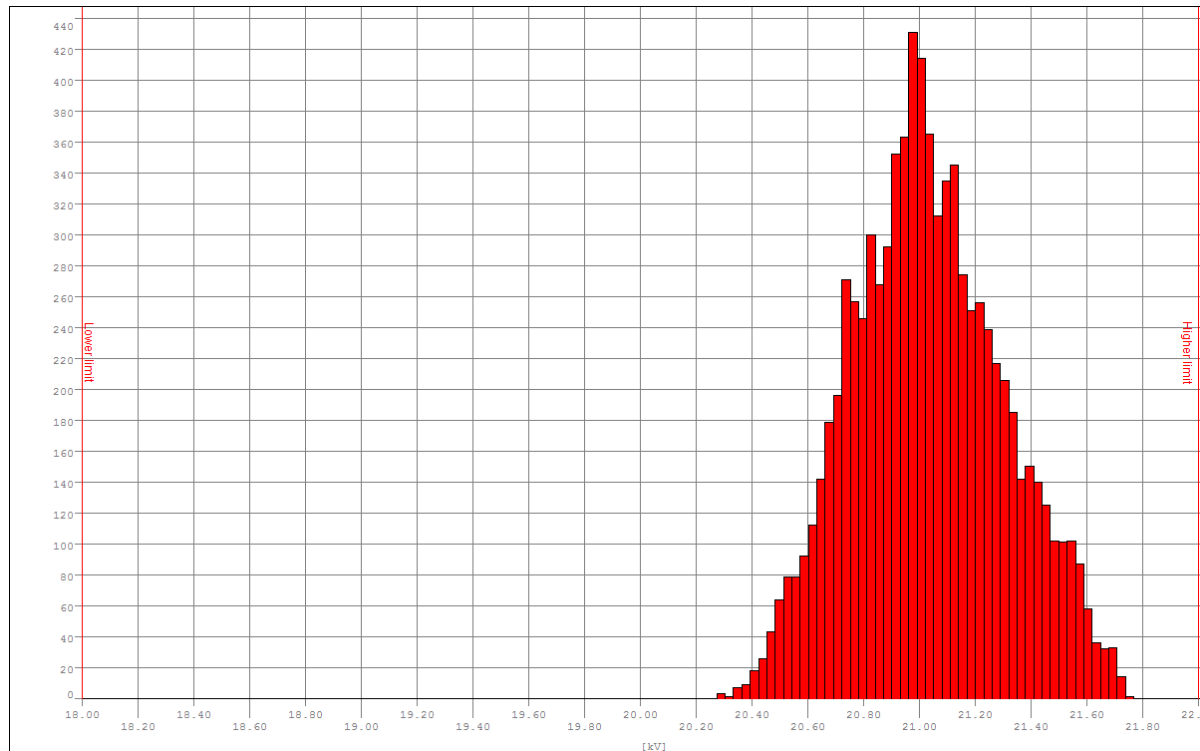
Voltage effective L3-L2 - 1st Test

Limits

Lower limit	18000.00V
Higher limit	22000.00V
Percentage	99.00%

Results

Min value	20273.76V
Average value	21032.46V
Max value	21738.64V
Undercut	0.00%
Overcut	0.00%
Total out	0.00%
Result	Passed
Recording vacancy	84.11%



- Voltage effective L3-L2 (10m) [STATIA 110/20 KV DETA]
- Marker Lower limit
- Marker Higher limit

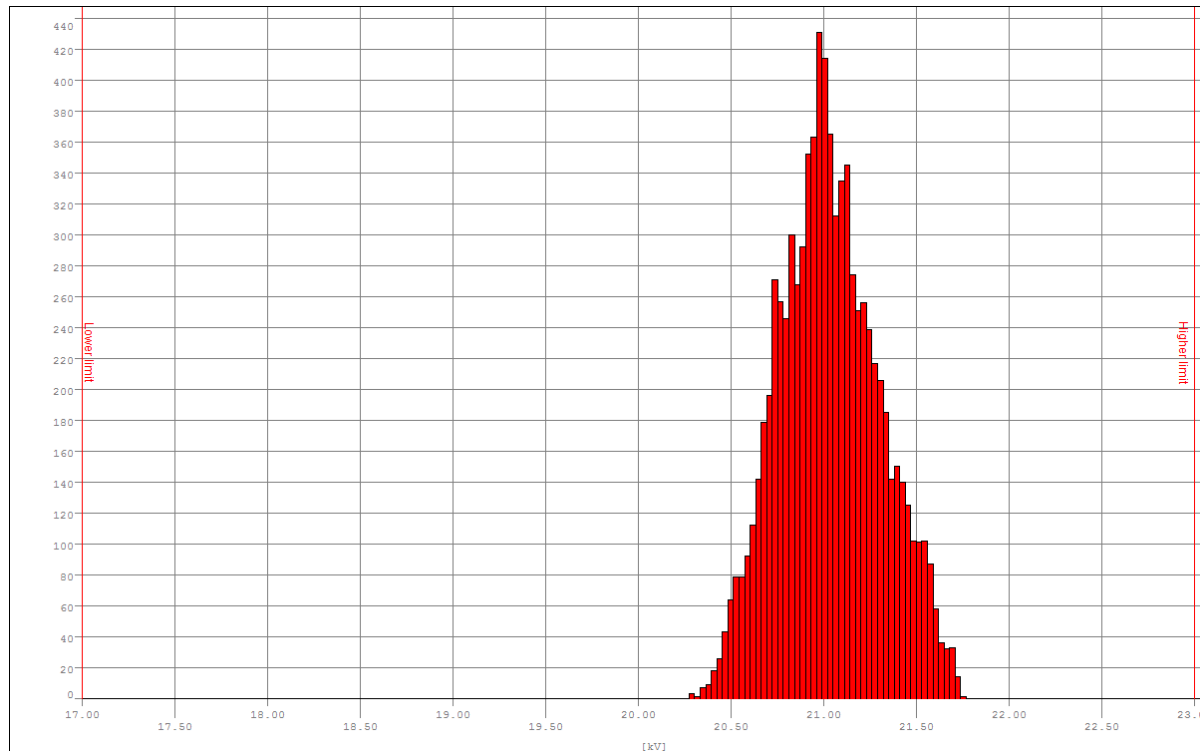
Voltage effective L3-L2 - 2nd Test

Limits

Lower limit	17000.00V
Higher limit	23000.00V
Percentage	100.00%

Results

Min value	20273.76V
Average value	21032.46V
Max value	21738.64V
Undercut	0.00%
Overcut	0.00%
Total out	0.00%
Result	Passed
Recording vacancy	84.11%



- Voltage effective L3-L2 (10m) [STATIA 110/20 KV DETA]
- Marker Lower limit
- Marker Higher limit

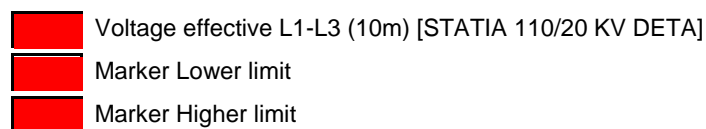
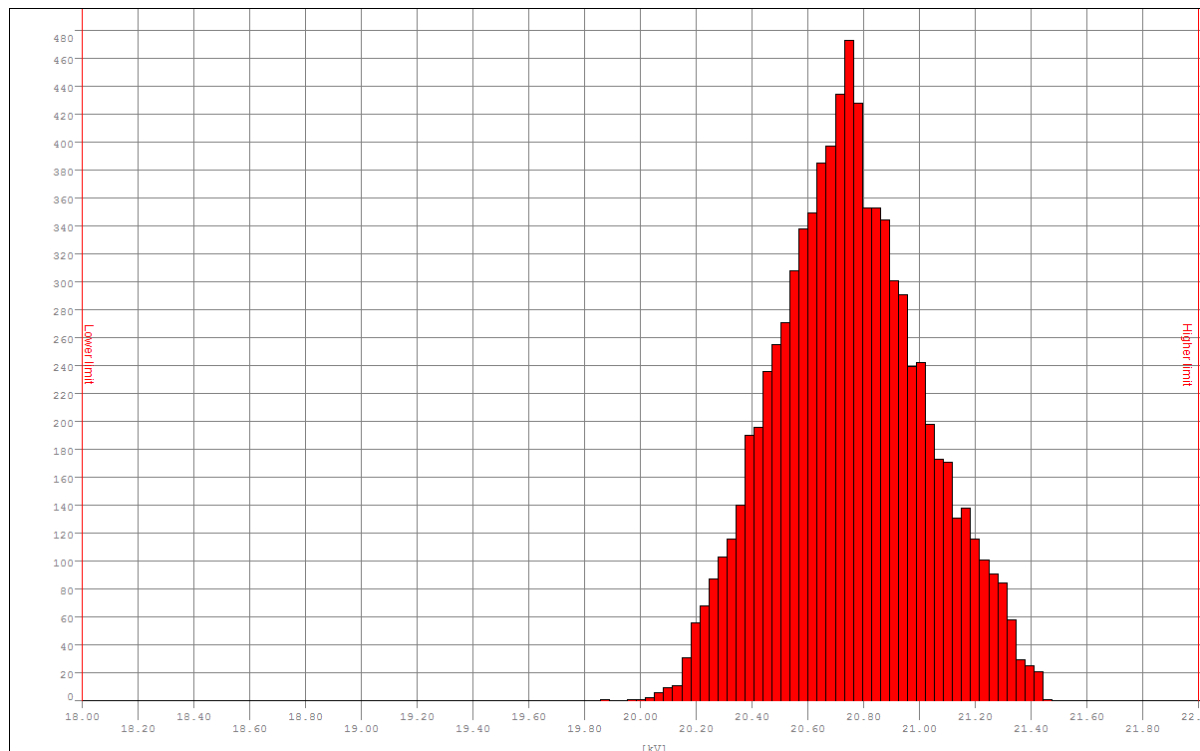
Voltage effective L1-L3 - 1st Test

Limits

Lower limit	18000.00V
Higher limit	22000.00V
Percentage	99.00%

Results

Min value	19857.23V
Average value	20751.42V
Max value	21442.45V
Undercut	0.00%
Overcut	0.00%
Total out	0.00%
Result	Passed
Recording vacancy	84.11%



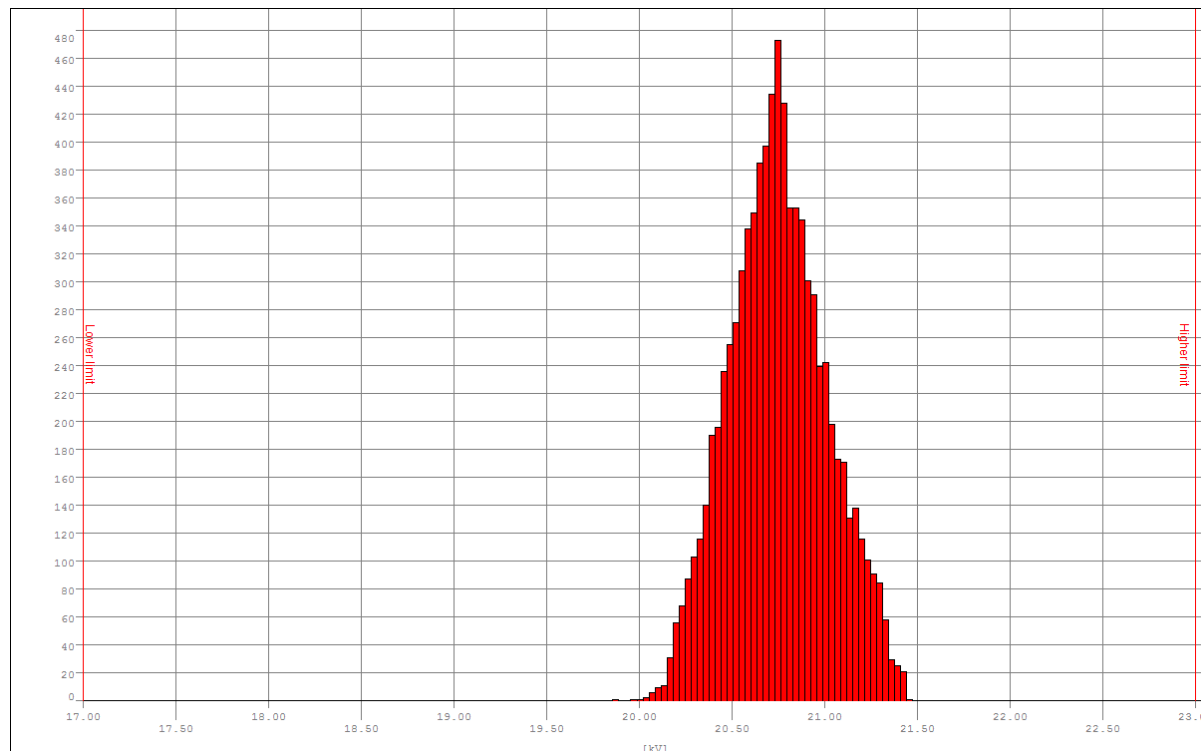
Voltage effective L1-L3 - 2nd Test

Limits

Lower limit	17000.00V
Higher limit	23000.00V
Percentage	100.00%

Results

Min value	19857.23V
Average value	20751.42V
Max value	21442.45V
Undercut	0.00%
Overcut	0.00%
Total out	0.00%
Result	Passed
Recording vacancy	84.11%



- Voltage effective L1-L3 (10m) [STATIA 110/20 KV DETA]
- Marker Lower limit
- Marker Higher limit

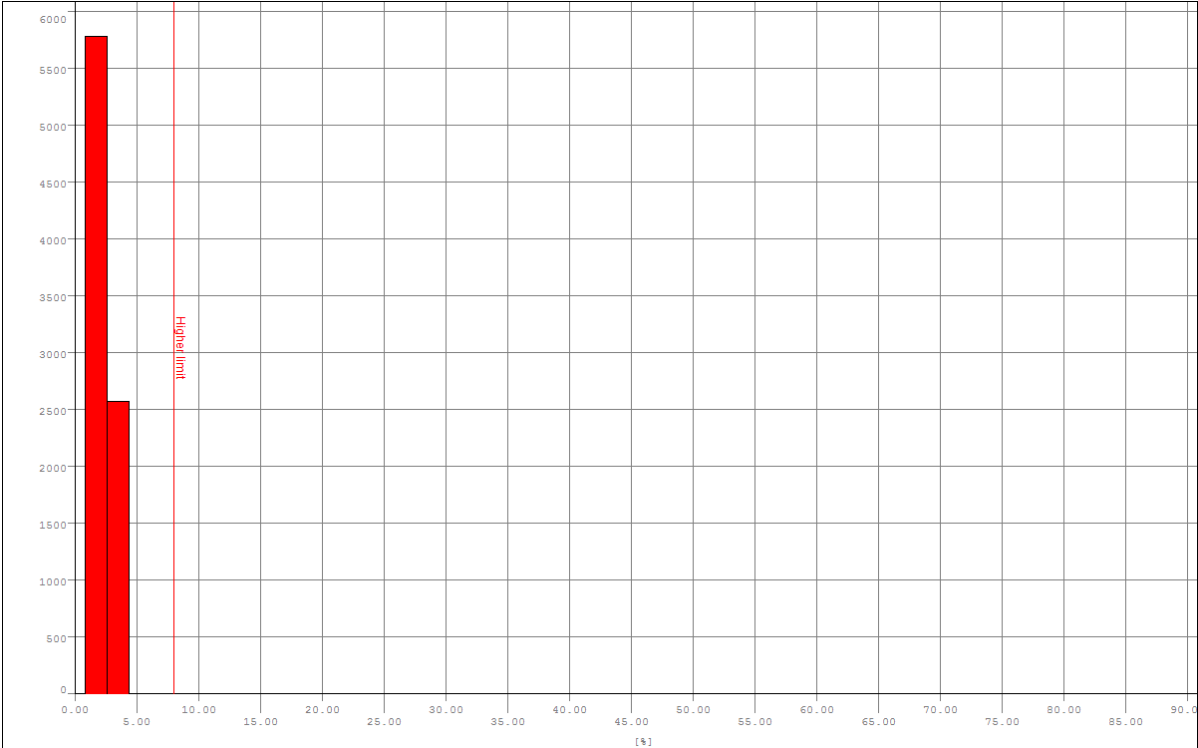
THD U L2-L1

Limits

Lower limit	--
Higher limit	8.00%
Percentage	95.00%

Results

Min value	0.83%
Average value	2.24%
Max value	87.71%
Undercut	--
Overcut	0.01%
Total out	0.01%
Result	Passed
Recording vacancy	84.11%



- THD U L2-L1 (10m) [STATIA 110/20 KV DETA]
- Marker Higher limit

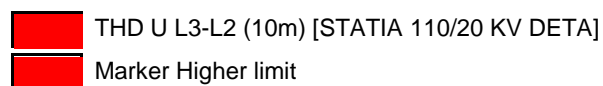
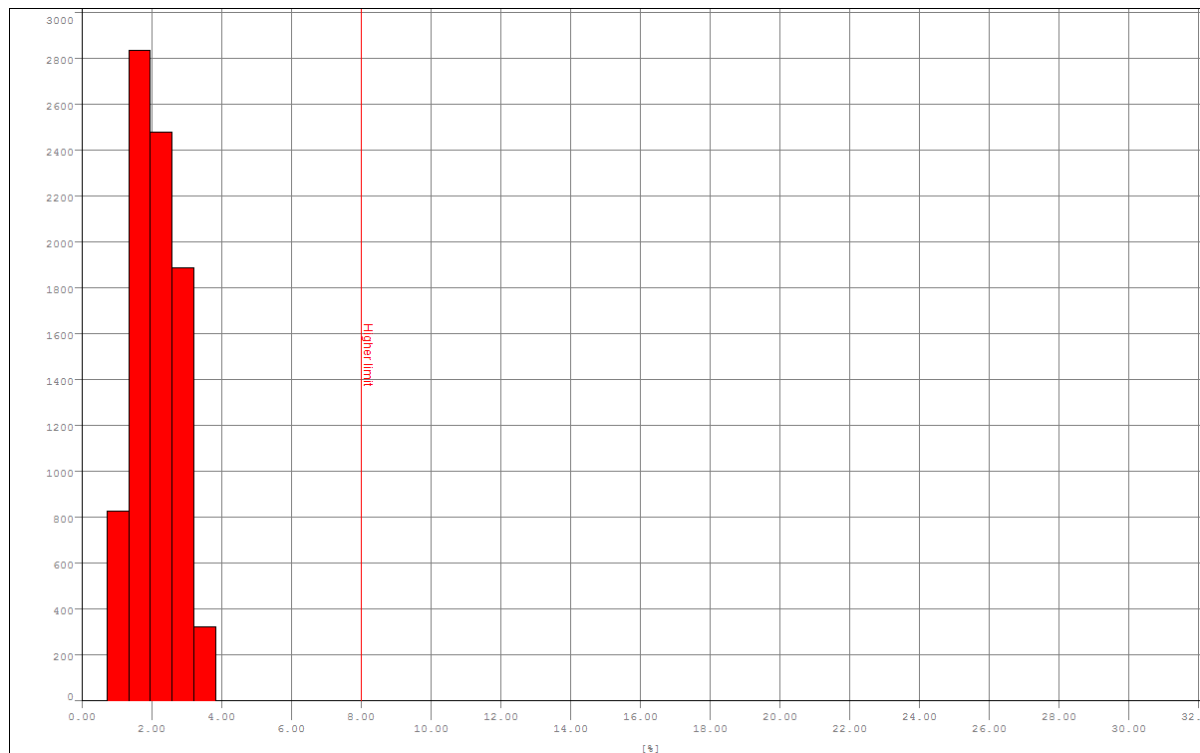
THD U L3-L2

Limits

Lower limit	--
Higher limit	8.00%
Percentage	95.00%

Results

Min value	0.72%
Average value	2.13%
Max value	31.11%
Undercut	--
Overcut	0.01%
Total out	0.01%
Result	Passed
Recording vacancy	84.11%



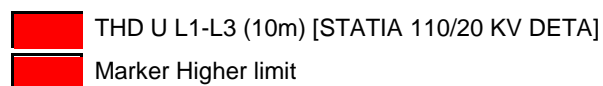
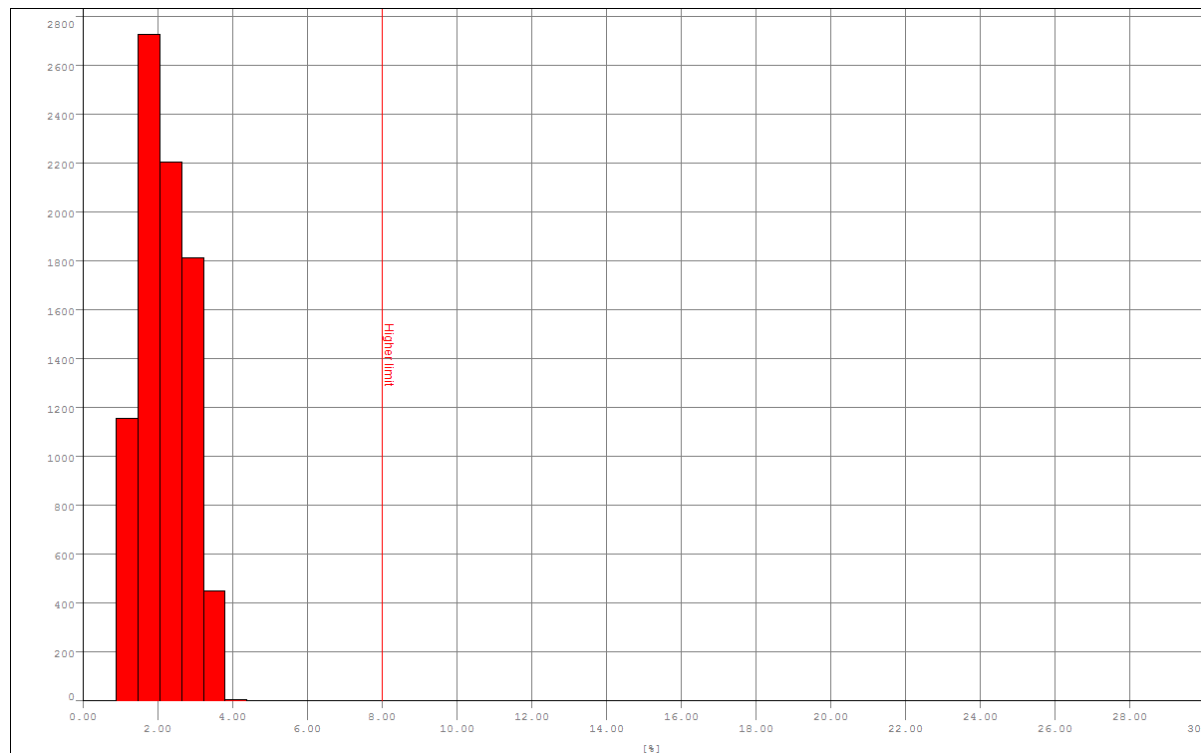
THD U L1-L3

Limits

Lower limit	--
Higher limit	8.00%
Percentage	95.00%

Results

Min value	0.87%
Average value	2.18%
Max value	29.58%
Undercut	--
Overcut	0.01%
Total out	0.01%
Result	Passed
Recording vacancy	84.11%



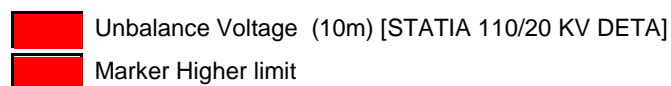
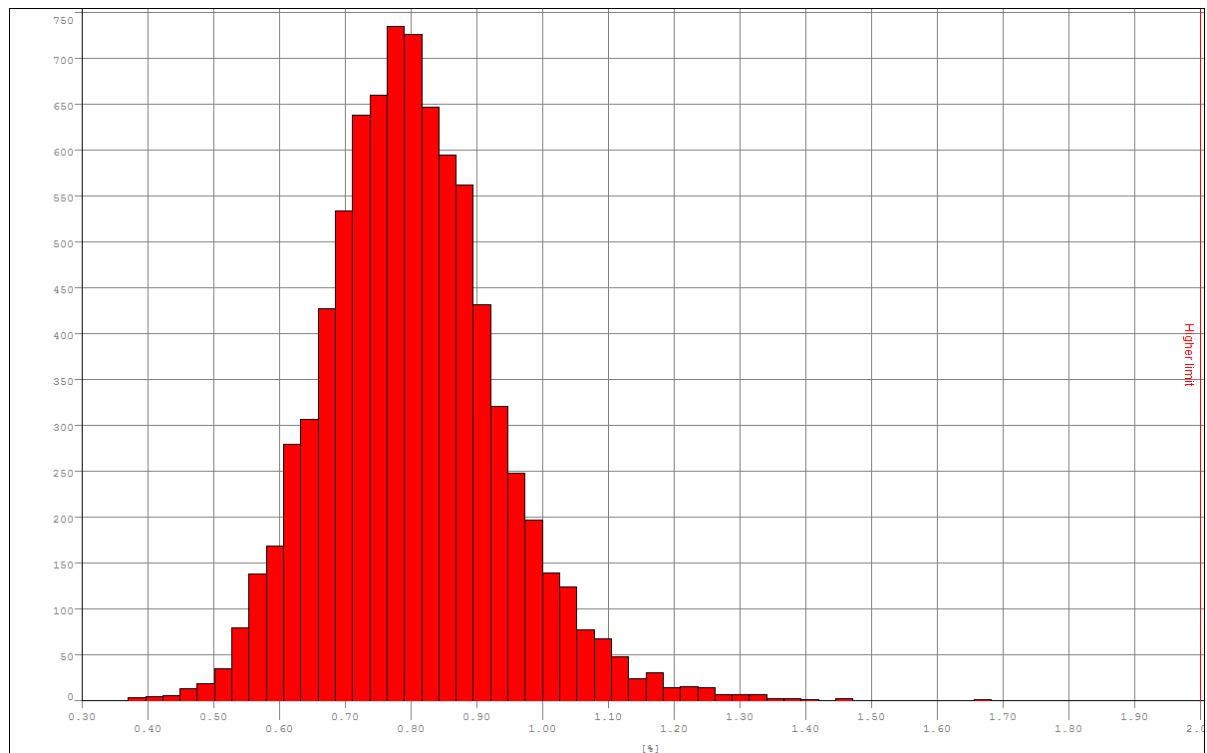
Unbalance Voltage

Limits

Lower limit	--
Higher limit	2.00%
Percentage	95.00%

Results

Min value	0.37%
Average value	0.80%
Max value	1.66%
Undercut	--
Overcut	0.00%
Total out	0.00%
Result	Passed
Recording vacancy	84.11%



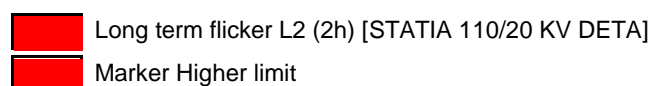
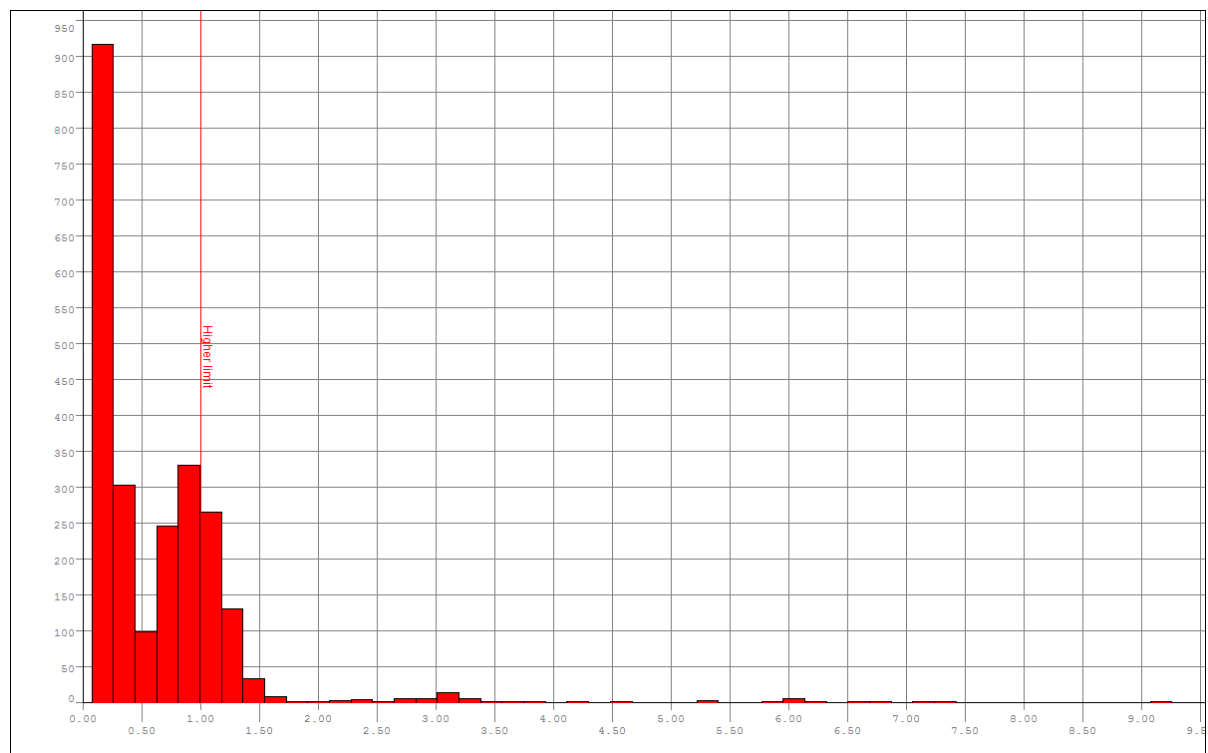
Long term flicker L2

Limits

Lower limit	--
Higher limit	1.00
Percentage	95.00%

Results

Min value	0.07
Average value	0.63
Max value	9.07
Undercut	--
Overcut	20.47%
Total out	20.47%
Result	Failed
Recording vacancy	45.34%



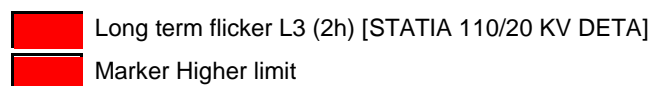
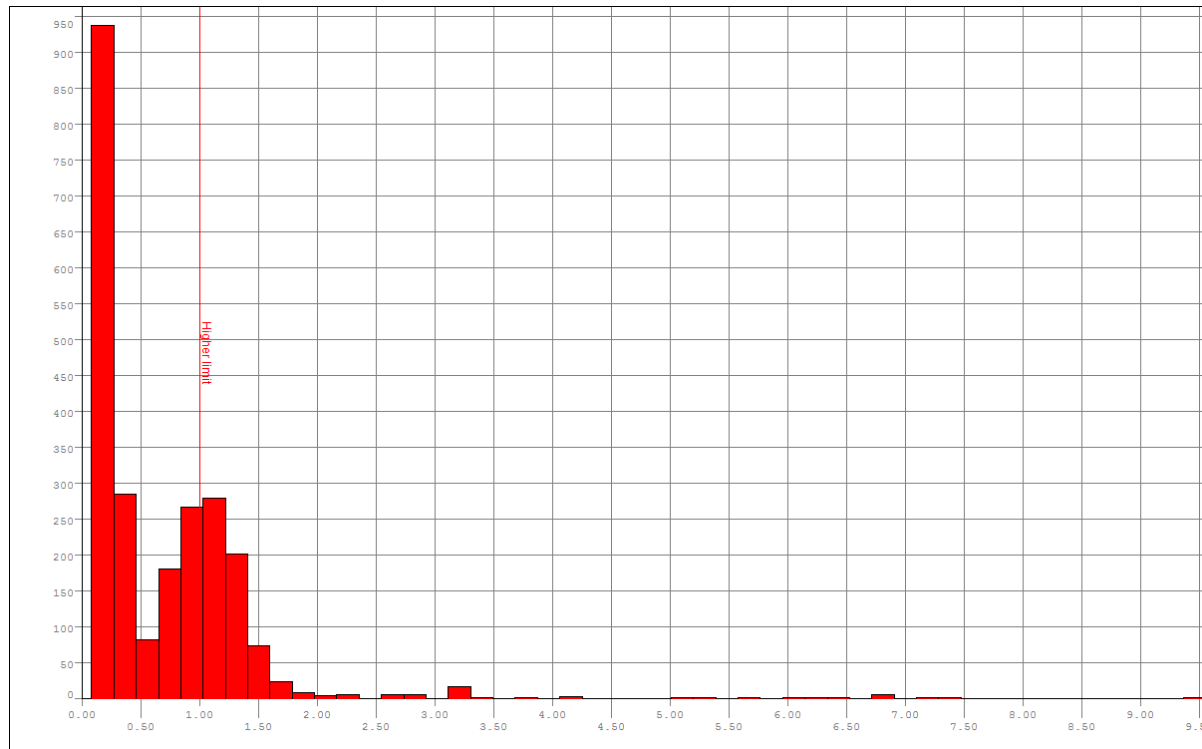
Long term flicker L3

Limits

Lower limit	--
Higher limit	1.00
Percentage	95.00%

Results

Min value	0.08
Average value	0.68
Max value	9.37
Undercut	--
Overcut	28.57%
Total out	28.57%
Result	Failed
Recording vacancy	45.34%



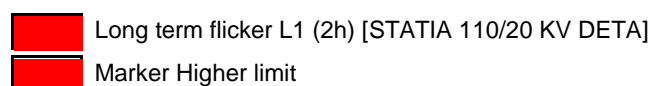
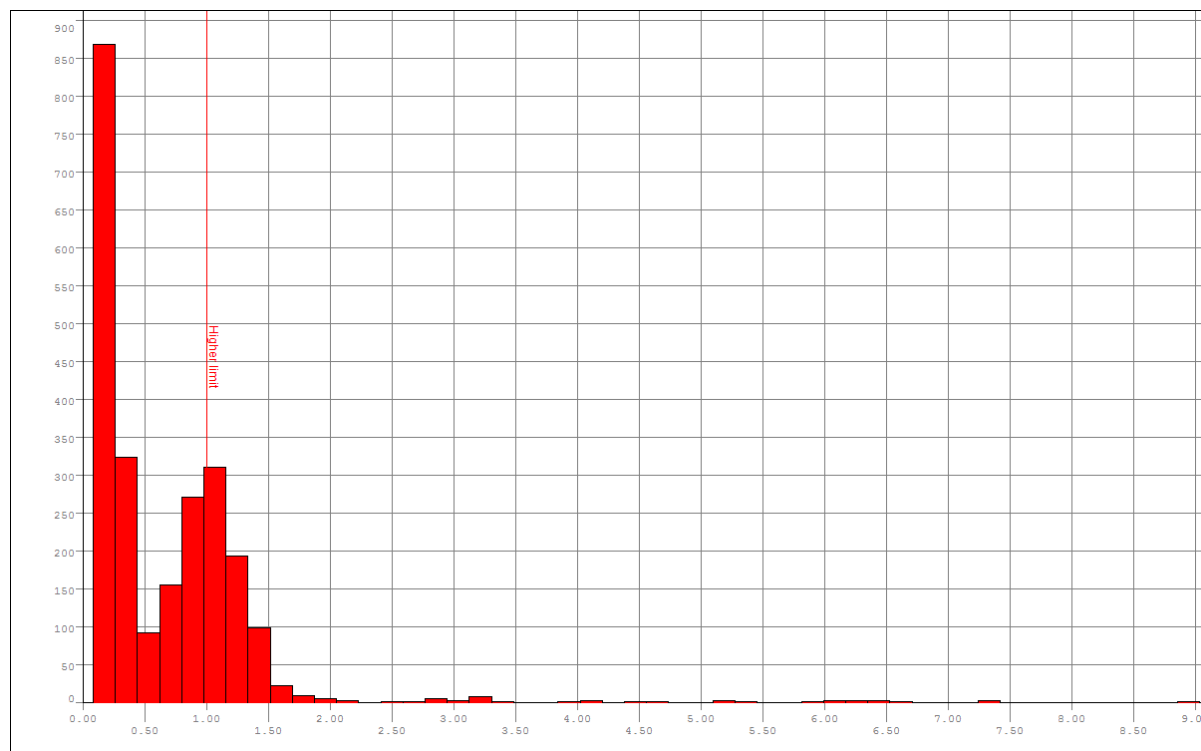
Long term flicker L1

Limits

Lower limit	--
Higher limit	1.00
Percentage	95.00%

Results

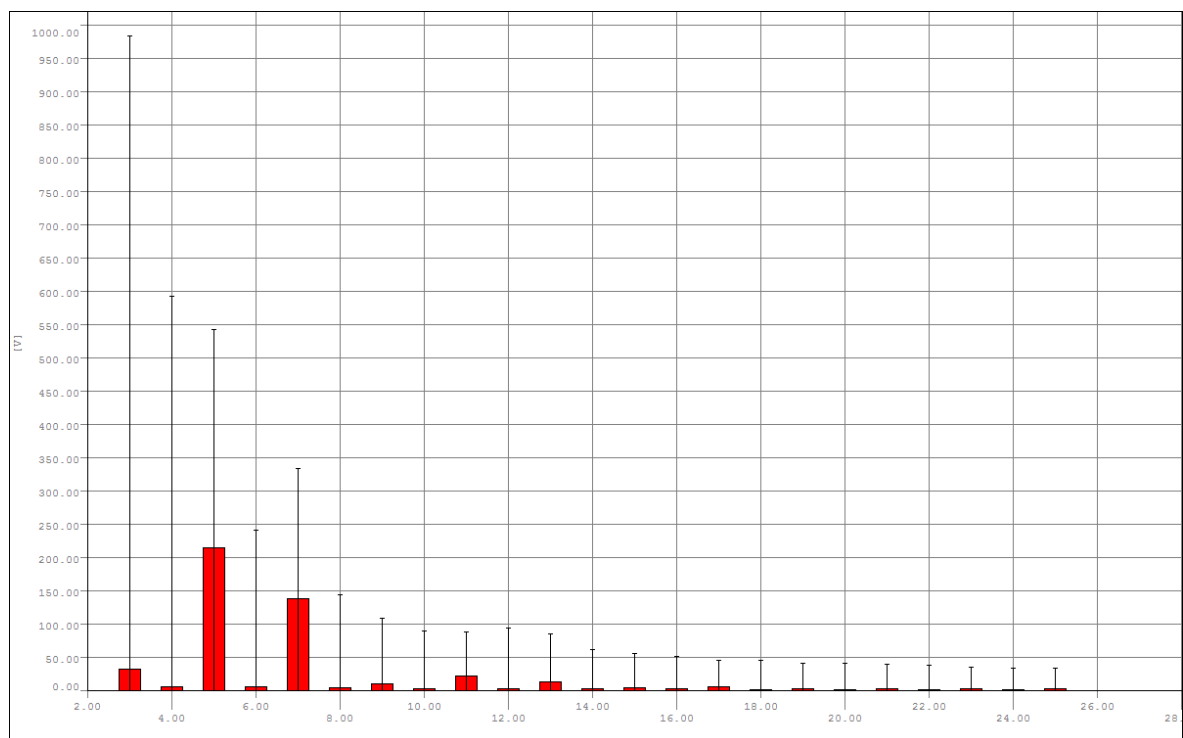
Min value	0.08
Average value	0.66
Max value	8.86
Undercut	--
Overcut	26.90%
Total out	26.90%
Result	Failed
Recording vacancy	45.34%



Harmonics voltage (rel.) L2

Value	Higher limit	Min value	Overcut
	Percentage	Average value	Recording vacancy
		Max value	Result
2.Harmonic Voltage L2	2.00%	0.02%	0.00%
	95.00%	0.06%	84.11%
		0.28%	Passed
3.Harmonic Voltage L2	5.00%	0.04%	0.00%
	95.00%	0.26%	84.11%
		0.81%	Passed
4.Harmonic Voltage L2	1.00%	0.02%	0.00%
	95.00%	0.05%	84.11%
		0.22%	Passed
5.Harmonic Voltage L2	6.00%	0.14%	0.00%
	95.00%	1.75%	84.11%
		3.81%	Passed
6.Harmonic Voltage L2	0.50%	0.02%	0.00%
	95.00%	0.05%	84.11%
		0.26%	Passed
7.Harmonic Voltage L2	5.00%	0.08%	0.00%
	95.00%	1.13%	84.11%
		2.37%	Passed
8.Harmonic Voltage L2	0.50%	0.01%	0.00%
	95.00%	0.03%	84.11%
		0.21%	Passed
9.Harmonic Voltage L2	1.50%	0.02%	0.00%
	95.00%	0.08%	84.11%
		0.36%	Passed
10.Harmonic Voltage L2	0.50%	0.01%	0.00%
	95.00%	0.02%	84.11%
		0.06%	Passed
11.Harmonic Voltage L2	3.50%	0.04%	0.00%
	95.00%	0.18%	84.11%
		0.36%	Passed
12.Harmonic Voltage L2	0.50%	0.01%	0.00%
	95.00%	0.02%	84.11%
		0.07%	Passed
13.Harmonic Voltage L2	3.00%	0.02%	0.00%
	95.00%	0.11%	84.11%
		0.37%	Passed
14.Harmonic Voltage L2	0.50%	0.01%	0.00%
	95.00%	0.02%	84.11%
		0.05%	Passed
15.Harmonic Voltage L2	0.50%	0.01%	0.00%
	95.00%	0.04%	84.11%
		0.17%	Passed
16.Harmonic Voltage L2	0.50%	0.01%	0.00%
	95.00%	0.02%	84.11%
		0.05%	Passed
17.Harmonic Voltage L2	2.00%	0.01%	0.00%
	95.00%	0.04%	84.11%
		0.13%	Passed
18.Harmonic Voltage L2	0.50%	0.01%	0.00%
	95.00%	0.02%	84.11%
		0.05%	Passed

Value	Higher limit	Min value	Overcut
	Percentage	Average value	Recording vacancy
		Max value	Result
19.Harmonic Voltage L2	1.50%	0.01%	0.00%
	95.00%	0.03%	84.11%
		0.12%	Passed
20.Harmonic Voltage L2	0.50%	0.01%	0.00%
	95.00%	0.02%	84.11%
		0.05%	Passed
21.Harmonic Voltage L2	0.50%	0.01%	0.00%
	95.00%	0.02%	84.11%
		0.06%	Passed
22.Harmonic Voltage L2	0.50%	0.01%	0.00%
	95.00%	0.02%	84.11%
		0.05%	Passed
23.Harmonic Voltage L2	1.50%	0.01%	0.00%
	95.00%	0.02%	84.11%
		0.08%	Passed
24.Harmonic Voltage L2	0.50%	0.01%	0.00%
	95.00%	0.02%	84.11%
		0.05%	Passed
25.Harmonic Voltage L2	1.50%	0.01%	0.00%
	95.00%	0.02%	84.11%
		0.08%	Passed

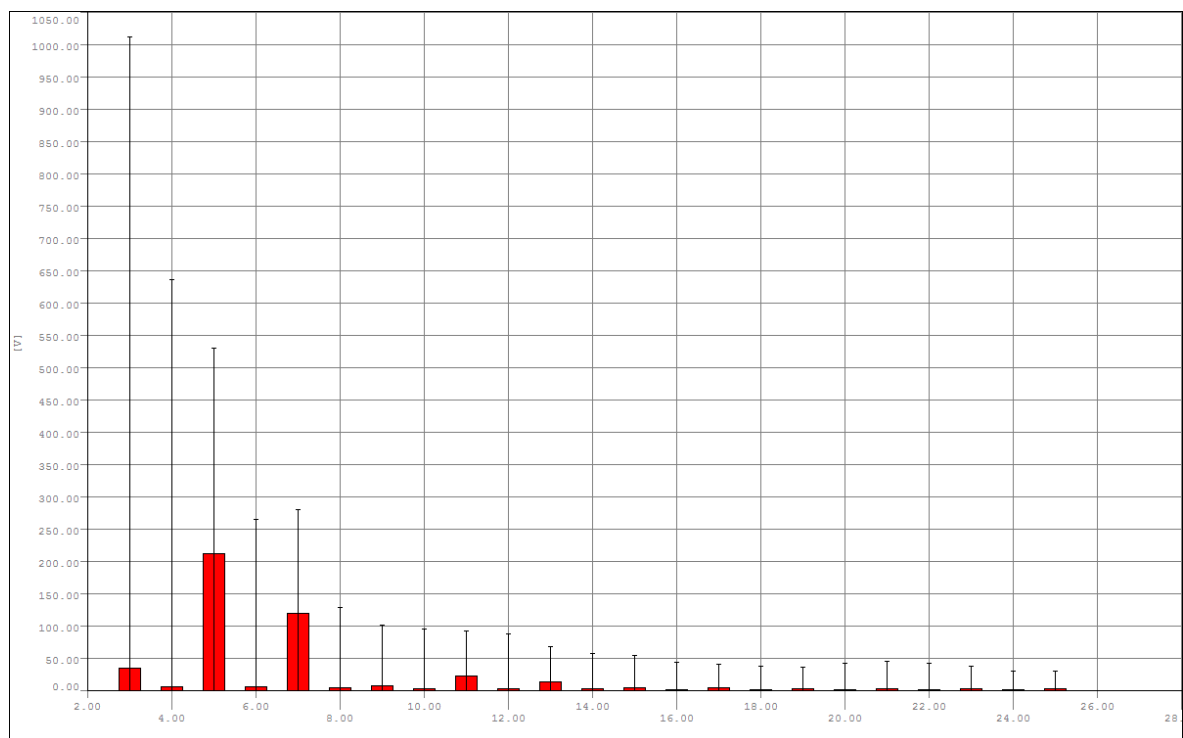


Harmonics voltage L2 [STATIA 110/20 KV DETA]

Harmonics voltage (rel.) L3

Value	Higher limit	Min value	Overcut
	Percentage	Average value	Recording vacancy
		Max value	Result
2.Harmonic Voltage L3	2.00%	0.02%	0.00%
	95.00%	0.06%	84.11%
		0.28%	Passed
3.Harmonic Voltage L3	5.00%	0.07%	0.00%
	95.00%	0.28%	84.11%
		0.83%	Passed
4.Harmonic Voltage L3	1.00%	0.02%	0.00%
	95.00%	0.05%	84.11%
		0.22%	Passed
5.Harmonic Voltage L3	6.00%	0.17%	0.00%
	95.00%	1.74%	84.11%
		3.69%	Passed
6.Harmonic Voltage L3	0.50%	0.02%	0.00%
	95.00%	0.05%	84.11%
		0.27%	Passed
7.Harmonic Voltage L3	5.00%	0.07%	0.00%
	95.00%	0.99%	84.11%
		2.08%	Passed
8.Harmonic Voltage L3	0.50%	0.02%	0.00%
	95.00%	0.03%	84.11%
		0.20%	Passed
9.Harmonic Voltage L3	1.50%	0.02%	0.00%
	95.00%	0.06%	84.11%
		0.28%	Passed
10.Harmonic Voltage L3	0.50%	0.01%	0.00%
	95.00%	0.02%	84.11%
		0.06%	Passed
11.Harmonic Voltage L3	3.50%	0.02%	0.00%
	95.00%	0.19%	84.11%
		0.41%	Passed
12.Harmonic Voltage L3	0.50%	0.01%	0.00%
	95.00%	0.02%	84.11%
		0.07%	Passed
13.Harmonic Voltage L3	3.00%	0.02%	0.00%
	95.00%	0.11%	84.11%
		0.34%	Passed
14.Harmonic Voltage L3	0.50%	0.01%	0.00%
	95.00%	0.02%	84.11%
		0.04%	Passed
15.Harmonic Voltage L3	0.50%	0.01%	0.00%
	95.00%	0.04%	84.11%
		0.18%	Passed
16.Harmonic Voltage L3	0.50%	0.01%	0.00%
	95.00%	0.02%	84.11%
		0.06%	Passed
17.Harmonic Voltage L3	2.00%	0.01%	0.00%
	95.00%	0.04%	84.11%
		0.13%	Passed
18.Harmonic Voltage L3	0.50%	0.01%	0.00%
	95.00%	0.02%	84.11%
		0.06%	Passed

Value	Higher limit	Min value	Overcut
	Percentage	Average value	Recording vacancy
		Max value	Result
19.Harmonic Voltage L3	1.50%	0.01%	0.00%
	95.00%	0.03%	84.11%
		0.12%	Passed
20.Harmonic Voltage L3	0.50%	0.01%	0.00%
	95.00%	0.02%	84.11%
		0.05%	Passed
21.Harmonic Voltage L3	0.50%	0.01%	0.00%
	95.00%	0.02%	84.11%
		0.06%	Passed
22.Harmonic Voltage L3	0.50%	0.01%	0.00%
	95.00%	0.02%	84.11%
		0.06%	Passed
23.Harmonic Voltage L3	1.50%	0.01%	0.00%
	95.00%	0.03%	84.11%
		0.12%	Passed
24.Harmonic Voltage L3	0.50%	0.01%	0.00%
	95.00%	0.02%	84.11%
		0.05%	Passed
25.Harmonic Voltage L3	1.50%	0.01%	0.00%
	95.00%	0.02%	84.11%
		0.08%	Passed

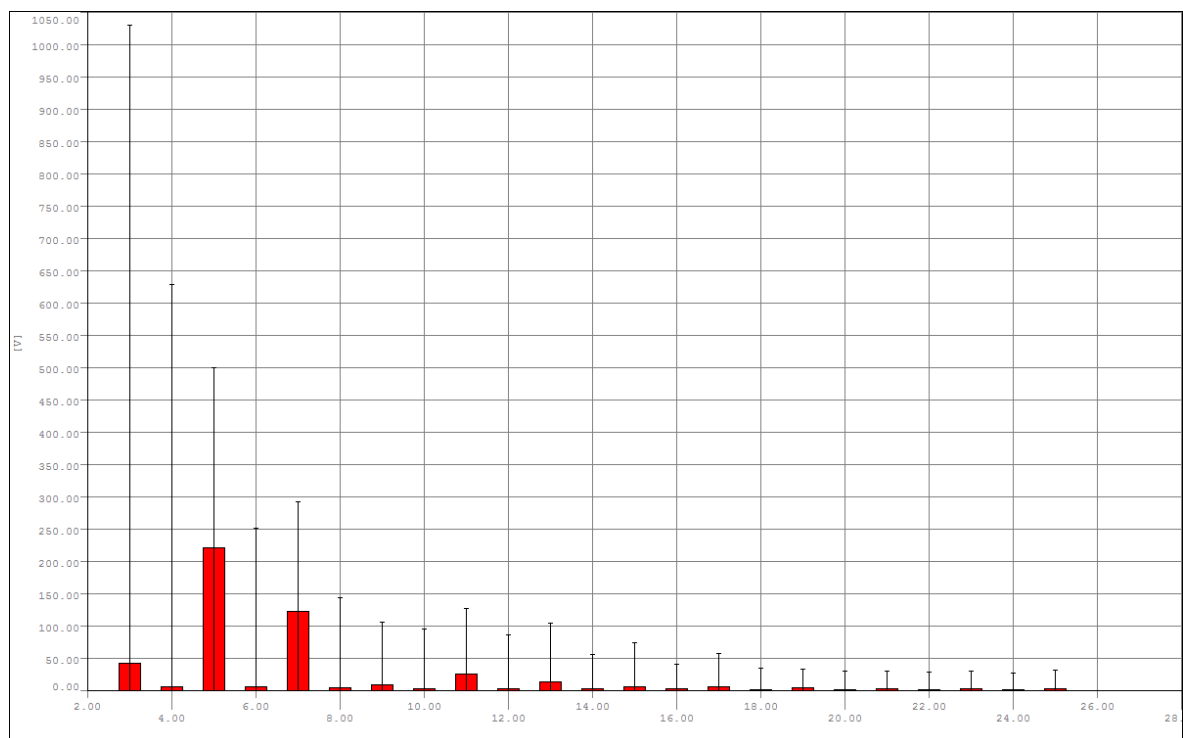


Harmonics voltage L3 [STATIA 110/20 KV DETA]

Harmonics voltage (rel.) L1

Value	Higher limit	Min value	Overcut
	Percentage	Average value	Recording vacancy
		Max value	Result
2.Harmonic Voltage L1	2.00%	0.02%	0.00%
	95.00%	0.06%	84.11%
		0.29%	Passed
3.Harmonic Voltage L1	5.00%	0.04%	0.00%
	95.00%	0.35%	84.11%
		1.61%	Passed
4.Harmonic Voltage L1	1.00%	0.02%	0.00%
	95.00%	0.06%	84.11%
		0.35%	Passed
5.Harmonic Voltage L1	6.00%	0.17%	0.00%
	95.00%	1.86%	84.11%
		3.86%	Passed
6.Harmonic Voltage L1	0.50%	0.02%	0.00%
	95.00%	0.05%	84.11%
		0.30%	Passed
7.Harmonic Voltage L1	5.00%	0.11%	0.00%
	95.00%	1.03%	84.11%
		2.16%	Passed
8.Harmonic Voltage L1	0.50%	0.02%	0.00%
	95.00%	0.03%	84.11%
		0.17%	Passed
9.Harmonic Voltage L1	1.50%	0.02%	0.00%
	95.00%	0.07%	84.11%
		0.32%	Passed
10.Harmonic Voltage L1	0.50%	0.01%	0.00%
	95.00%	0.02%	84.11%
		0.07%	Passed
11.Harmonic Voltage L1	3.50%	0.05%	0.00%
	95.00%	0.22%	84.11%
		0.47%	Passed
12.Harmonic Voltage L1	0.50%	0.01%	0.00%
	95.00%	0.02%	84.11%
		0.08%	Passed
13.Harmonic Voltage L1	3.00%	0.02%	0.00%
	95.00%	0.11%	84.11%
		0.46%	Passed
14.Harmonic Voltage L1	0.50%	0.01%	0.00%
	95.00%	0.02%	84.11%
		0.05%	Passed
15.Harmonic Voltage L1	0.50%	0.01%	0.00%
	95.00%	0.05%	84.11%
		0.32%	Passed
16.Harmonic Voltage L1	0.50%	0.01%	0.00%
	95.00%	0.02%	84.11%
		0.06%	Passed
17.Harmonic Voltage L1	2.00%	0.02%	0.00%
	95.00%	0.05%	84.11%
		0.21%	Passed
18.Harmonic Voltage L1	0.50%	0.01%	0.00%
	95.00%	0.02%	84.11%
		0.06%	Passed

Value	Higher limit	Min value	Overcut
	Percentage	Average value	Recording vacancy
		Max value	Result
19.Harmonic Voltage L1	1.50%	0.01%	0.00%
	95.00%	0.03%	84.11%
20.Harmonic Voltage L1	0.50%	0.01%	0.00%
	95.00%	0.02%	84.11%
21.Harmonic Voltage L1	0.50%	0.01%	0.00%
	95.00%	0.02%	84.11%
22.Harmonic Voltage L1	0.50%	0.01%	0.00%
	95.00%	0.02%	84.11%
23.Harmonic Voltage L1	1.50%	0.01%	0.00%
	95.00%	0.03%	84.11%
24.Harmonic Voltage L1	0.50%	0.01%	0.00%
	95.00%	0.02%	84.11%
25.Harmonic Voltage L1	1.50%	0.01%	0.00%
	95.00%	0.02%	84.11%
		0.10%	Passed



Harmonics voltage L1 [STATIA 110/20 KV DETA]

Undervoltage

705 Events have been found.

Residual voltage u %	Duration t				
	10 - 200ms	> 200ms	> 500ms	> 1s	> 5s - 60s
< 90 - 80 %	100	16	11	13	1
< 80 - 70 %	37	13	2	38	1
< 70 - 40 %	38	6	0	88	39
< 40 - 5 %	2	0	0	13	11
< 5 %	20	5	46	73	54

78 out of ranges!

Starttime Endtime	Length	Input	Eventtype	Limit	Min	Avg	Max
1/4/15 2:01:00 PM'466	1.116s	L1	Voltage outage	999.99	0.00	96.81	619.09
1/4/15 2:01:01 PM'582							
1/4/15 2:15:31 PM'525	1.057s	L1	Voltage outage	999.99	0.00	148.91	894.03
1/4/15 2:15:32 PM'583							
1/30/15 9:14:13 AM'111	1.061s	L1	Voltage outage	999.99	0.00	128.37	894.23
1/30/15 9:14:14 AM'172							
1/30/15 12:11:49 PM'847	1.047s	L1	Voltage outage	999.99	0.00	139.72	970.85
1/30/15 12:11:50 PM'894							
1/30/15 12:44:54 PM'244	1.047s	L1	Voltage outage	999.99	0.00	131.64	917.63
1/30/15 12:44:55 PM'291							
1/31/15 5:55:20 AM'027	26.852s	L1	Voltage outage	999.99	0.00	29.13	855.52
1/31/15 5:55:46 AM'879							
1/31/15 5:55:47 AM'330	2m 8s	L1	Voltage outage	999.99	0.00	5.95	576.77
1/31/15 5:57:55 AM'693							
1/31/15 5:57:56 AM'347	8.726s	L1	Voltage outage	999.99	0.00	39.45	862.36
1/31/15 5:58:05 AM'073							
1/31/15 5:58:05 AM'646	10m 46s	L1	Voltage outage	999.99	0.00	0.00	669.08
1/31/15 6:08:51 AM'935							
2/7/15 1:36:42 AM'181	979.200ms	L1	Voltage outage	999.99	0.00	89.79	846.04
2/7/15 1:36:43 AM'161							
2/7/15 1:36:43 AM'822	20.112s	L1	Voltage outage	999.99	0.00	24.52	878.87
2/7/15 1:37:03 AM'935							
2/7/15 1:37:04 AM'346	1m 54s	L1	Voltage outage	999.99	0.00	8.41	746.24
2/7/15 1:38:58 AM'392							
2/20/15 1:36:07 PM'540	19.413s	L1	Voltage outage	999.99	0.00	11.89	545.54
2/20/15 1:36:26 PM'954							
2/20/15 1:36:27 PM'348	2m 17s	L1	Voltage outage	999.99	0.00	5.95	686.97
2/20/15 1:38:44 PM'651							
3/4/15 6:38:01 PM'473	5.244s	L1	Voltage outage	999.99	0.00	30.90	635.07
3/4/15 6:38:06 PM'718							
3/26/15 8:23:45 PM'816	1.054s	L1	Voltage outage	999.99	0.00	92.70	656.86
3/26/15 8:23:46 PM'870							
5/13/15 4:04:48 PM'687	15m 45s	L1	Voltage outage	999.99	0.00	0.00	545.32
5/13/15 4:20:34 PM'183							
5/15/15 1:50:42 PM'660	1.080s	L1	Voltage outage	999.99	0.00	100.04	658.29
5/15/15 1:50:43 PM'741							
5/27/15 11:39:55 AM'785	766.800ms	L1	Voltage outage	999.99	0.00	139.84	733.35
5/27/15 11:39:56 AM'551							
5/27/15 11:39:56 AM'994	20.072s	L1	Voltage outage	999.99	0.00	22.25	789.12
5/27/15 11:40:17 AM'066							
5/27/15 11:40:17 AM'557	55.099s	L1	Voltage outage	999.99	0.00	11.89	767.17
5/27/15 11:41:12 AM'656							
5/27/15 11:41:13 AM'151	5m 12s	L1	Voltage outage	999.99	0.00	0.00	677.64
5/27/15 11:46:25 AM'416							
5/27/15 11:46:25 AM'901	4m 51s	L1	Voltage outage	999.99	0.00	0.00	665.26
5/27/15 11:51:17 AM'494							
6/4/15 12:27:56 PM'352	1.114s	L1	Voltage outage	999.99	0.00	38.54	408.47
6/4/15 12:27:57 PM'467							

Starttime	Length	Input	Eventtype	Limit	Min	Avg	Max
Endtime							
6/4/15 12:27:57 PM'658	20.127s	L1	Voltage outage	999.99	0.00	19.72	832.43
6/4/15 12:28:17 PM'784							
6/4/15 12:28:17 PM'973	3m 27s	L1	Voltage outage	999.99	0.00	0.00	594.97
6/4/15 12:31:45 PM'541							
6/4/15 12:31:45 PM'751	1h 38m	L1	Voltage outage	999.99	0.00	0.00	361.87
6/4/15 2:10:34 PM'104							
6/14/15 10:31:40 PM'357	3.013s	L1	Voltage outage	999.99	0.00	87.20	994.69
6/14/15 10:31:43 PM'370							
6/14/15 10:31:43 PM'803	20.125s	L1	Voltage outage	999.99	0.00	13.30	497.79
6/14/15 10:32:03 PM'928							
6/14/15 10:32:04 PM'512	2m 27s	L1	Voltage outage	999.99	0.00	5.95	752.30
6/14/15 10:34:31 PM'776							
6/15/15 12:18:53 PM'511	908.050ms	L1	Voltage outage	999.99	0.00	81.10	639.38
6/15/15 12:18:54 PM'419							
6/18/15 6:22:10 PM'404	653.651ms	L1	Voltage outage	999.99	0.00	171.12	931.45
6/18/15 6:22:11 PM'058							
6/28/15 1:12:17 PM'384	1.111s	L1	Voltage outage	999.99	0.00	86.79	584.41
6/28/15 1:12:18 PM'495							
7/4/15 2:17:51 PM'070	704.201ms	L1	Voltage outage	999.99	0.00	242.58	866.71
7/4/15 2:17:51 PM'774							
7/4/15 6:16:49 PM'238	939.101ms	L1	Voltage outage	999.99	0.00	125.59	684.65
7/4/15 6:16:50 PM'178							
7/5/15 9:10:08 AM'024	46.548s	L1	Voltage outage	999.99	0.00	29.13	851.57
7/5/15 9:10:54 AM'572							
7/5/15 12:57:59 PM'907	46.507s	L1	Voltage outage	999.99	0.00	36.66	989.55
7/5/15 12:58:46 PM'414							
7/10/15 5:50:56 AM'607	2.875s	L1	Voltage outage	999.99	0.00	89.99	855.13
7/10/15 5:50:59 AM'482							
8/6/15 9:36:32 AM'851	756.451ms	L1	Voltage outage	999.99	0.00	125.45	687.51
8/6/15 9:36:33 AM'608							
8/6/15 3:23:19 PM'850	1.087s	L1	Voltage outage	999.99	0.00	63.21	638.74
8/6/15 3:23:20 PM'936							
8/6/15 3:36:33 PM'405	34.243s	L1	Voltage outage	999.99	0.00	23.03	792.92
8/6/15 3:37:07 PM'649							
8/6/15 3:44:11 PM'710	1.109s	L1	Voltage outage	999.99	0.00	98.08	910.92
8/6/15 3:44:12 PM'819							
8/6/15 3:59:16 PM'561	1.054s	L1	Voltage outage	999.99	0.00	130.15	763.27
8/6/15 3:59:17 PM'615							
8/6/15 8:29:12 PM'873	1.121s	L1	Voltage outage	999.99	0.00	124.46	870.25
8/6/15 8:29:13 PM'994							
8/10/15 6:04:45 PM'589	679.601ms	L1	Voltage outage	999.99	0.00	186.16	768.72
8/10/15 6:04:46 PM'269							
8/11/15 3:06:07 PM'799	959.050ms	L1	Voltage outage	999.99	0.00	165.12	919.96
8/11/15 3:06:08 PM'758							
8/12/15 8:35:45 AM'504	541.491ms	L1	Voltage outage	999.99	0.00	204.80	882.80
8/12/15 8:35:46 AM'046							
8/19/15 8:06:11 AM'506	530.051ms	L1	Voltage outage	999.99	0.00	122.02	612.37
8/19/15 8:06:12 AM'036							
8/20/15 12:35:30 AM'602	1.851s	L1	Voltage outage	999.99	0.00	55.15	490.96
8/20/15 12:35:32 AM'453							
8/20/15 1:21:51 AM'842	1.117s	L1	Voltage outage	999.99	0.00	158.46	995.22
8/20/15 1:21:52 AM'959							
8/20/15 6:22:28 PM'887	1.021s	L1	Voltage outage	999.99	0.00	112.67	648.14
8/20/15 6:22:29 PM'908							
8/20/15 6:24:04 PM'085	20.122s	L1	Voltage outage	999.99	0.00	15.73	408.64
8/20/15 6:24:24 PM'207							
8/20/15 6:31:16 PM'122	1.116s	L1	Voltage outage	999.99	0.00	57.35	601.53
8/20/15 6:31:17 PM'238							
8/22/15 8:43:04 PM'612	1.111s	L1	Voltage outage	999.99	0.00	128.23	992.16
8/22/15 8:43:05 PM'723							
8/24/15 8:45:48 AM'945	1.105s	L1	Voltage outage	999.99	0.00	87.60	516.44
8/24/15 8:45:50 AM'051							
8/28/15 5:13:48 PM'531	499.151ms	L1	Voltage outage	999.99	0.00	200.70	913.24
8/28/15 5:13:49 PM'030							
9/5/15 7:19:54 AM'920	2.954s	L1	Voltage outage	999.99	0.00	88.40	883.22
9/5/15 7:19:57 AM'875							
9/6/15 4:39:24 PM'683	885.451ms	L1	Voltage outage	999.99	0.00	190.76	794.68
9/6/15 4:39:25 PM'569							
9/11/15 10:06:34 AM'404	1.106s	L1	Voltage outage	999.99	0.00	163.51	987.21
9/11/15 10:06:35 AM'510							

Starttime	Length	Input	Eventtype	Limit	Min	Avg	Max
Endtime							
9/29/15 10:31:12 AM'548	1.118s	L1	Voltage outage	999.99	0.00	116.68	914.56
9/29/15 10:31:13 AM'665							
10/5/15 7:47:06 PM'204	2m 41s	L1	Voltage outage	999.99	0.00	0.00	332.11
10/5/15 7:49:47 PM'762							
10/7/15 12:14:29 PM'734	635.550ms	L1	Voltage outage	999.99	0.00	143.22	856.24
10/7/15 12:14:30 PM'369							
10/20/15 1:46:22 PM'221	976.951ms	L1	Voltage outage	999.99	0.00	90.19	650.67
10/20/15 1:46:23 PM'198							
10/26/15 6:44:08 PM'093	50.369s	L1	Voltage outage	999.99	0.00	15.73	624.52
10/26/15 6:44:58 PM'462							
11/2/15 7:28:43 AM'105	652.902ms	L1	Voltage outage	999.99	0.00	63.77	491.21
11/2/15 7:28:43 AM'758							
11/2/15 7:28:44 AM'165	20.113s	L1	Voltage outage	999.99	0.00	18.81	668.87
11/2/15 7:29:04 AM'278							
11/2/15 9:19:59 AM'133	20.112s	L1	Voltage outage	999.99	0.00	17.84	645.87
11/2/15 9:20:19 AM'245							
11/2/15 9:20:19 AM'650	2m 55s	L1	Voltage outage	999.99	0.00	0.00	442.10
11/2/15 9:23:14 AM'913							
11/2/15 9:23:15 AM'355	2m 11s	L1	Voltage outage	999.99	0.00	11.89	949.73
11/2/15 9:25:26 AM'742							
11/2/15 9:27:44 AM'654	44.404s	L1	Voltage outage	999.99	0.00	19.72	835.91
11/2/15 9:28:29 AM'058							
12/14/15 5:17:14 PM'622	5.240s	L1	Voltage outage	999.99	0.00	55.15	815.61
12/14/15 5:17:19 PM'861							
1/4/15 2:01:00 PM'479	1.106s	L2	Voltage outage	999.99	0.00	105.71	870.84
1/4/15 2:01:01 PM'585							
1/4/15 2:15:31 PM'539	1.037s	L2	Voltage outage	999.99	0.00	128.37	791.58
1/4/15 2:15:32 PM'576							
1/30/15 9:14:13 AM'104	1.071s	L2	Voltage outage	999.99	0.00	98.44	783.32
1/30/15 9:14:14 AM'175							
1/30/15 12:11:49 PM'810	1.077s	L2	Voltage outage	999.99	0.00	146.15	990.66
1/30/15 12:11:50 PM'887							
1/30/15 12:44:54 PM'207	1.078s	L2	Voltage outage	999.99	0.00	105.04	760.30
1/30/15 12:44:55 PM'284							
1/31/15 5:55:19 AM'990	26.893s	L2	Voltage outage	999.99	0.00	33.64	993.69
1/31/15 5:55:46 AM'883							
1/31/15 5:55:47 AM'323	2m 8s	L2	Voltage outage	999.99	0.00	8.41	958.86
1/31/15 5:57:55 AM'693							
1/31/15 5:57:56 AM'357	8.716s	L2	Voltage outage	999.99	0.00	29.73	599.91
1/31/15 5:58:05 AM'073							
1/31/15 5:58:05 AM'656	10m 46s	L2	Voltage outage	999.99	0.00	0.00	714.05
1/31/15 6:08:51 AM'936							
2/7/15 1:36:42 AM'185	969.300ms	L2	Voltage outage	999.99	0.00	58.87	547.74
2/7/15 1:36:43 AM'154							
2/7/15 1:36:43 AM'825	20.104s	L2	Voltage outage	999.99	0.00	26.59	916.08
2/7/15 1:37:03 AM'929							
2/7/15 1:37:04 AM'331	1m 54s	L2	Voltage outage	999.99	0.00	11.89	988.60
2/7/15 1:38:58 AM'388							
2/20/15 1:36:07 PM'544	19.414s	L2	Voltage outage	999.99	0.00	5.95	291.02
2/20/15 1:36:26 PM'958							
2/20/15 1:36:27 PM'352	2m 17s	L2	Voltage outage	999.99	0.00	5.95	766.32
2/20/15 1:38:44 PM'651							
3/4/15 6:38:01 PM'507	5.214s	L2	Voltage outage	999.99	0.00	50.11	788.74
3/4/15 6:38:06 PM'721							
3/26/15 8:23:45 PM'788	1.085s	L2	Voltage outage	999.99	0.00	76.16	757.06
3/26/15 8:23:46 PM'873							
5/13/15 4:04:48 PM'690	15m 45s	L2	Voltage outage	999.99	0.00	0.00	587.82
5/13/15 4:20:34 PM'176							
5/15/15 1:50:42 PM'733	1.011s	L2	Voltage outage	999.99	0.00	129.06	764.15
5/15/15 1:50:43 PM'744							
5/27/15 11:39:55 AM'788	766.801ms	L2	Voltage outage	999.99	0.00	157.56	859.15
5/27/15 11:39:56 AM'555							
5/27/15 11:39:56 AM'987	20.083s	L2	Voltage outage	999.99	0.00	23.03	905.39
5/27/15 11:40:17 AM'070							
5/27/15 11:40:17 AM'561	55.090s	L2	Voltage outage	999.99	0.00	21.44	939.32
5/27/15 11:41:12 AM'652							
5/27/15 11:41:13 AM'157	5m 12s	L2	Voltage outage	999.99	0.00	5.95	896.16
5/27/15 11:46:25 AM'416							
5/27/15 11:46:25 AM'891	4m 51s	L2	Voltage outage	999.99	0.00	5.95	749.59
5/27/15 11:51:17 AM'495							

Starttime	Length	Input	Eventtype	Limit	Min	Avg	Max
Endtime							
6/4/15 12:27:56 PM'395	1.065s	L2	Voltage outage	999.99	0.00	155.30	892.40
6/4/15 12:27:57 PM'460							
6/4/15 12:27:57 PM'661	20.117s	L2	Voltage outage	999.99	0.00	18.81	830.82
6/4/15 12:28:17 PM'777							
6/4/15 12:28:17 PM'976	3m 27s	L2	Voltage outage	999.99	0.00	0.00	483.66
6/4/15 12:31:45 PM'531							
6/4/15 12:31:45 PM'751	1h 38m	L2	Voltage outage	999.99	0.00	0.00	71.85
6/4/15 2:10:34 PM'105							
6/14/15 10:31:40 PM'370	2.993s	L2	Voltage outage	999.99	0.00	75.92	779.86
6/14/15 10:31:43 PM'363							
6/14/15 10:31:43 PM'807	20.116s	L2	Voltage outage	999.99	0.00	15.73	513.42
6/14/15 10:32:03 PM'922							

Overvoltage

109 Events have been found.

Residual voltage u %	Duration t ms		
	10 - 500ms	> 500ms	> 5s - 60s
> 110 - < 120	31	18	17
120 - %	6	0	0

37 out of ranges!

100 deepest events

Starttime Endtime	Length	Input	Eventtype	Limit	Min	Avg	Max
2/27/15 9:41:21 AM'301	140.100ms	L2	Over voltage	22000.00	23584.69	31303.18	35775.45
2/27/15 9:41:21 AM'441							
2/27/15 9:41:21 AM'298	140.049ms	L1	Over voltage	22000.00	22137.59	30315.21	33679.67
2/27/15 9:41:21 AM'438							
5/13/15 4:04:48 PM'401	200.000ms	L2	Over voltage	22000.00	22977.46	30627.67	32863.74
5/13/15 4:04:48 PM'601							
5/13/15 4:04:48 PM'395	210.330ms	L3	Over voltage	22000.00	22897.93	29615.27	32855.93
5/13/15 4:04:48 PM'605							
5/13/15 4:04:48 PM'398	210.329ms	L1	Over voltage	22000.00	23048.55	29708.30	32830.91
5/13/15 4:04:48 PM'608							
2/27/15 9:41:21 AM'294	140.100ms	L3	Over voltage	22000.00	23294.09	29513.85	32556.11
2/27/15 9:41:21 AM'434							
12/7/15 4:15:03 AM'297	49.999ms	L2	Over voltage	22000.00	22129.87	22167.16	22204.38
12/7/15 4:15:03 AM'347							
12/7/15 1:46:22 AM'750	50.050ms	L2	Over voltage	22000.00	22128.01	22163.50	22198.94
12/7/15 1:46:22 AM'800							
12/11/15 1:57:28 AM'562	60.047ms	L2	Over voltage	22000.00	22179.01	22183.46	22187.90
12/11/15 1:57:28 AM'622							
10/23/15 12:24:34 PM'273	1m 42s	L2	Over voltage	22000.00	22111.63	22139.33	22167.00
10/23/15 12:26:16 PM'929							
10/11/15 2:18:56 AM'401	46m 13s	L2	Over voltage	22000.00	22000.00	22011.64	22153.60
10/11/15 3:05:10 AM'063							
5/20/15 4:30:29 PM'773	20.000ms	L3	Over voltage	22000.00	22137.85	22137.85	22137.85
5/20/15 4:30:29 PM'793							
12/10/15 2:33:36 AM'682	19.950ms	L3	Over voltage	22000.00	22137.11	22137.11	22137.11
12/10/15 2:33:36 AM'702							
3/26/15 10:52:18 PM'286	5m 12s	L2	Over voltage	22000.00	22000.05	22056.84	22129.93
3/26/15 10:57:30 PM'704							
12/6/15 3:05:02 AM'851	30.000ms	L2	Over voltage	22000.00	22024.96	22076.19	22127.30
12/6/15 3:05:02 AM'881							
5/13/15 3:30:24 AM'111	30.100ms	L2	Over voltage	22000.00	22034.60	22080.52	22126.34
5/13/15 3:30:24 AM'141							
10/11/15 3:18:28 AM'573	13m 5s	L2	Over voltage	22000.00	22000.00	22016.38	22125.27
10/11/15 3:31:34 AM'041							
10/11/15 3:51:06 AM'117	1h 11m	L2	Over voltage	22000.00	22000.00	22015.18	22125.23
10/11/15 5:02:16 AM'733							
12/10/15 2:33:36 AM'668	41.763s	L2	Over voltage	22000.00	22023.32	22073.56	22123.70
12/10/15 2:34:18 AM'431							
11/18/15 3:46:35 AM'129	20.050ms	L1	Over voltage	22000.00	22119.20	22119.20	22119.20
11/18/15 3:46:35 AM'149							
10/11/15 1:57:46 AM'686	21m 6s	L2	Over voltage	22000.00	22000.00	22006.10	22103.56
10/11/15 2:18:53 AM'102							
9/22/15 3:07:05 AM'322	5m 3s	L2	Over voltage	22000.00	22000.05	22012.95	22100.80
9/22/15 3:12:09 AM'060							
10/11/15 5:43:41 AM'845	39m 43s	L2	Over voltage	22000.00	22000.02	22019.08	22098.40
10/11/15 6:23:25 AM'372							
10/11/15 1:39:54 AM'749	9m 5s	L2	Over voltage	22000.00	22000.06	22019.41	22096.69
10/11/15 1:49:00 AM'594							

Starttime	Length	Input	Eventtype	Limit	Min	Avg	Max
Endtime							
11/20/15 1:39:53 AM'914	19.950ms	L1	Over voltage	22000.00	22092.57	22092.57	22092.57
11/20/15 1:39:53 AM'934							
11/20/15 3:55:29 AM'058	60.054ms	L2	Over voltage	22000.00	22092.52	22092.52	22092.52
11/20/15 3:55:29 AM'118							
10/11/15 3:38:51 AM'600	6m 39s	L2	Over voltage	22000.00	22000.01	22006.88	22091.81
10/11/15 3:45:30 AM'678							
10/11/15 6:26:21 AM'013	12m 59s	L2	Over voltage	22000.00	22018.19	22053.41	22090.30
10/11/15 6:39:20 AM'611							
10/11/15 5:21:54 AM'779	2m 54s	L2	Over voltage	22000.00	22000.00	22016.74	22082.05
10/11/15 5:24:49 AM'020							
10/11/15 6:42:40 AM'016	1m 8s	L2	Over voltage	22000.00	22000.00	22016.33	22077.25
10/11/15 6:43:48 AM'345							
10/11/15 1:22:02 AM'103	17m 49s	L2	Over voltage	22000.00	22000.00	22013.70	22074.77
10/11/15 1:39:52 AM'060							
10/11/15 5:39:21 AM'759	3m 25s	L2	Over voltage	22000.00	22000.02	22016.92	22070.41
10/11/15 5:42:46 AM'998							
12/12/15 3:25:31 AM'871	39.950ms	L2	Over voltage	22000.00	22005.28	22034.70	22064.09
12/12/15 3:25:31 AM'911							
3/17/15 3:59:04 PM'809	39.900ms	L2	Over voltage	22000.00	22062.96	22062.96	22062.96
3/17/15 3:59:04 PM'849							
10/11/15 1:21:32 AM'823	8.917s	L2	Over voltage	22000.00	22001.21	22022.79	22061.84
10/11/15 1:21:41 AM'740							
5/20/15 4:30:29 PM'770	40.049ms	L2	Over voltage	22000.00	22059.04	22059.04	22059.04
5/20/15 4:30:29 PM'810							
10/11/15 1:20:23 AM'549	1m 9s	L2	Over voltage	22000.00	22000.04	22015.37	22057.55
10/11/15 1:21:32 AM'703							
12/15/15 4:15:53 AM'473	29.143s	L2	Over voltage	22000.00	22010.87	22033.67	22056.46
12/15/15 4:16:22 AM'616							
11/22/15 9:49:56 AM'605	19.900ms	L2	Over voltage	22000.00	22054.31	22054.31	22054.31
11/22/15 9:49:56 AM'625							
12/11/15 1:57:28 AM'569	29.947ms	L1	Over voltage	22000.00	22053.56	22053.56	22053.56
12/11/15 1:57:28 AM'599							
12/7/15 3:10:18 AM'667	20.001ms	L3	Over voltage	22000.00	22053.37	22053.37	22053.37
12/7/15 3:10:18 AM'687							
10/11/15 5:43:18 AM'164	23.311s	L2	Over voltage	22000.00	22000.03	22014.81	22052.64
10/11/15 5:43:41 AM'475							
10/11/15 5:42:54 AM'718	22.156s	L2	Over voltage	22000.00	22001.15	22012.46	22050.70
10/11/15 5:43:16 AM'874							
10/9/15 1:51:46 AM'404	6m 46s	L2	Over voltage	22000.00	22000.89	22015.63	22049.18
10/9/15 1:58:32 AM'623							
10/11/15 3:09:42 AM'859	1.199s	L2	Over voltage	22000.00	22007.80	22025.80	22049.09
10/11/15 3:09:44 AM'058							
10/11/15 5:42:47 AM'058	7.500s	L2	Over voltage	22000.00	22000.29	22018.70	22048.40
10/11/15 5:42:54 AM'558							
12/13/15 2:32:17 AM'613	29.951ms	L2	Over voltage	22000.00	22046.23	22046.23	22046.23
12/13/15 2:32:17 AM'643							
10/11/15 1:19:48 AM'092	35.287s	L2	Over voltage	22000.00	22000.16	22011.58	22044.68
10/11/15 1:20:23 AM'379							
6/2/15 5:31:42 PM'364	10m 51s	L2	Over voltage	22000.00	22044.40	22044.40	22044.40
6/2/15 5:42:34 PM'260							
10/10/15 11:48:17 PM'263	1m 9s	L2	Over voltage	22000.00	22000.26	22012.50	22044.02
10/10/15 11:49:27 PM'133							
10/11/15 6:40:03 AM'379	2m 36s	L2	Over voltage	22000.00	22001.06	22014.14	22043.58
10/11/15 6:42:39 AM'426							
12/6/15 5:09:21 AM'717	29.950ms	L2	Over voltage	22000.00	22042.62	22042.62	22042.62
12/6/15 5:09:21 AM'747							
10/2/15 2:37:31 AM'207	1m 32s	L2	Over voltage	22000.00	22000.07	22017.13	22041.27
10/2/15 2:39:03 AM'226							
10/11/15 3:05:38 AM'028	4.607s	L2	Over voltage	22000.00	22001.36	22018.27	22040.54
10/11/15 3:05:42 AM'635							
10/10/15 11:43:48 PM'759	3m 6s	L2	Over voltage	22000.00	22000.04	22011.61	22040.24
10/10/15 11:46:55 PM'372							
12/6/15 3:13:51 AM'989	9.949ms	L3	Over voltage	22000.00	22039.21	22039.21	22039.21
12/6/15 3:13:51 AM'999							
12/7/15 3:10:18 AM'664	29.949ms	L2	Over voltage	22000.00	22038.22	22038.22	22038.22
12/7/15 3:10:18 AM'694							
12/7/15 4:30:47 AM'058	9.950ms	L1	Over voltage	22000.00	22036.87	22036.87	22036.87
12/7/15 4:30:47 AM'068							
12/11/15 5:30:29 AM'828	9.950ms	L1	Over voltage	22000.00	22036.44	22036.44	22036.44
12/11/15 5:30:29 AM'838							

Starttime	Length	Input	Eventtype	Limit	Min	Avg	Max
Endtime							
12/11/15 5:50:11 AM'570	29.999ms	L2	Over voltage	22000.00	22035.30	22035.30	22035.30
12/11/15 5:50:11 AM'600							
10/11/15 3:38:51 AM'530	20.050ms	L2	Over voltage	22000.00	22034.98	22034.98	22034.98
10/11/15 3:38:51 AM'550							
3/30/15 4:51:57 AM'448	30m 38s	L2	Over voltage	22000.00	22000.00	22009.39	22034.83
3/30/15 5:22:35 AM'508							
10/11/15 3:09:36 AM'533	4.107s	L2	Over voltage	22000.00	22002.10	22013.40	22034.70
10/11/15 3:09:40 AM'640							
10/11/15 6:45:45 AM'049	6.075s	L2	Over voltage	22000.00	22034.41	22034.41	22034.41
10/11/15 6:45:51 AM'124							
10/11/15 7:14:47 AM'444	1m 58s	L2	Over voltage	22000.00	22000.35	22008.73	22033.11
10/11/15 7:16:46 AM'212							
10/11/15 1:53:52 AM'265	1m 23s	L2	Over voltage	22000.00	22030.89	22030.89	22030.89
10/11/15 1:55:15 AM'963							
10/9/15 2:10:54 AM'522	4m 20s	L2	Over voltage	22000.00	22000.89	22015.11	22029.32
10/9/15 2:15:15 AM'038							
10/11/15 3:45:31 AM'238	1m 7s	L2	Over voltage	22000.00	22000.05	22013.38	22027.82
10/11/15 3:46:38 AM'481							
10/11/15 3:05:35 AM'110	2.059s	L2	Over voltage	22000.00	22003.20	22011.83	22026.82
10/11/15 3:05:37 AM'169							
10/11/15 6:45:44 AM'369	149.853ms	L2	Over voltage	22000.00	22025.71	22025.71	22025.71
10/11/15 6:45:44 AM'519							
12/12/15 1:51:54 AM'322	20.050ms	L2	Over voltage	22000.00	22025.40	22025.40	22025.40
12/12/15 1:51:54 AM'342							
10/11/15 7:34:40 AM'118	9.231s	L2	Over voltage	22000.00	22025.23	22025.23	22025.23
10/11/15 7:34:49 AM'349							
10/11/15 7:16:52 AM'201	51.415s	L2	Over voltage	22000.00	22003.95	22010.79	22023.48
10/11/15 7:17:43 AM'616							
10/11/15 3:06:10 AM'507	51.648s	L2	Over voltage	22000.00	22000.96	22009.04	22022.24
10/11/15 3:07:02 AM'154							
10/10/15 2:03:30 AM'844	19m 16s	L2	Over voltage	22000.00	22021.60	22021.60	22021.60
10/10/15 2:22:47 AM'701							
10/11/15 6:58:14 AM'890	1m 29s	L2	Over voltage	22000.00	22000.25	22009.31	22020.85
10/11/15 6:59:44 AM'078							
12/17/15 3:47:32 AM'984	30.014ms	L2	Over voltage	22000.00	22019.86	22019.86	22019.86
12/17/15 3:47:33 AM'014							
10/11/15 6:44:57 AM'831	439.494ms	L2	Over voltage	22000.00	22015.16	22017.23	22019.30
10/11/15 6:44:58 AM'270							
10/11/15 3:06:02 AM'568	7.289s	L2	Over voltage	22000.00	22019.16	22019.16	22019.16
10/11/15 3:06:09 AM'857							
9/22/15 3:06:16 AM'419	48.534s	L2	Over voltage	22000.00	22000.54	22007.85	22018.41
9/22/15 3:07:04 AM'952							
10/11/15 6:44:54 AM'814	2.498s	L2	Over voltage	22000.00	22017.35	22017.35	22017.35
10/11/15 6:44:57 AM'311							
10/11/15 7:34:37 AM'858	810.251ms	L2	Over voltage	22000.00	22017.08	22017.08	22017.08
10/11/15 7:34:38 AM'668							
10/11/15 6:45:40 AM'233	1.189s	L2	Over voltage	22000.00	22016.12	22016.12	22016.12
10/11/15 6:45:41 AM'422							
10/10/15 11:47:38 PM'288	10.626s	L2	Over voltage	22000.00	22008.62	22012.11	22015.60
10/10/15 11:47:48 PM'913							
10/11/15 6:44:58 AM'360	3.587s	L2	Over voltage	22000.00	22004.82	22009.32	22013.39
10/11/15 6:45:01 AM'947							
12/17/15 3:06:17 AM'706	30.013ms	L2	Over voltage	22000.00	22013.37	22013.37	22013.37
12/17/15 3:06:17 AM'736							
10/11/15 6:43:49 AM'194	1m 0s	L2	Over voltage	22000.00	22001.58	22006.40	22012.04
10/11/15 6:44:49 AM'718							
10/11/15 3:05:20 AM'618	2.719s	L2	Over voltage	22000.00	22010.61	22011.16	22011.70
10/11/15 3:05:23 AM'336							
9/22/15 4:41:33 AM'059	18m 35s	L2	Over voltage	22000.00	22000.02	22002.92	22010.45
9/22/15 5:00:08 AM'869							
10/11/15 7:32:16 AM'142	39.236s	L2	Over voltage	22000.00	22009.94	22009.94	22009.94
10/11/15 7:32:55 AM'378							
10/11/15 7:35:10 AM'920	17m 1s	L2	Over voltage	22000.00	22009.80	22009.80	22009.80
10/11/15 7:52:12 AM'866							
10/11/15 3:05:13 AM'992	4.637s	L2	Over voltage	22000.00	22005.64	22007.58	22009.52
10/11/15 3:05:18 AM'629							
10/11/15 6:45:25 AM'307	719.398ms	L2	Over voltage	22000.00	22008.71	22008.71	22008.71
10/11/15 6:45:26 AM'026							
9/22/15 2:41:13 AM'235	539.849ms	L2	Over voltage	22000.00	22008.39	22008.39	22008.39
9/22/15 2:41:13 AM'775							

Starttime	Length	Input	Eventtype	Limit	Min	Avg	Max
Endtime							
10/11/15 6:45:38 AM'584	1.139s	L2	Over voltage	22000.00	22001.24	22004.44	22007.64
10/11/15 6:45:39 AM'723							
9/22/15 5:09:51 AM'486	33m 52s	L2	Over voltage	22000.00	22000.27	22002.21	22006.16
9/22/15 5:43:44 AM'388							
12/6/15 5:09:21 AM'720	20.001ms	L3	Over voltage	22000.00	22005.94	22005.94	22005.94
12/6/15 5:09:21 AM'740							
10/11/15 12:51:42 AM'038	9m 22s	L2	Over voltage	22000.00	22000.02	22001.73	22005.31
10/11/15 1:01:04 AM'188							
10/11/15 3:05:43 AM'035	13.074s	L2	Over voltage	22000.00	22005.18	22005.18	22005.18
10/11/15 3:05:56 AM'110							
10/11/15 7:33:20 AM'222	4.071s	L2	Over voltage	22000.00	22004.31	22004.31	22004.31
10/11/15 7:33:24 AM'293							